

MATTHEW NG



吳岳豐
Matthew Ng

拆解 • 融合 • 實驗設計

設計的「變」，可以是中式變西式、傳統變摩登，潮流舊變新、又回頭去懷舊..... 但Matthew Ng卻說設計多變不限於風格、潮流的變化，而是要將風格拆成碎片，再將特色元素重新組合，變出新意。就像一塊塊平板的lego，只要發揮心思就可變成不同樣式的堡壘一樣，Matthew正以創新與融合，為人建造獨一無二的城堡。

DECONSTRUCTION • RECONSTRUCTION • EXPERIMENTAL DESIGN

Matthew Ng is fond of all sorts of 'changes' – from Chinese style changing to Western, the traditional transforming into the modern, the old becoming the new (but not without a touch of old nostalgia), and so on. However, although fond of changes, Matthew thinks that when it comes design, trends and fashions may change, but instead of disappearing, they in fact become reintegrated and incorporated as something new. Like a block of Lego, this is the style that Matthew believes in – an amalgamation of styles, blended together and remixed into something new. Like a fortress built out of many pieces, Matthew likes to integrate and amalgamate in the name innovation, to help his clients build their unique castle.

100mm design workshop. 百厘米設計工程有限公司

Project references:

禮頓山	Leighton Hill
雲地利臺	Ventris Place
景翠園	Greenview Gardens
碧堤半島	Bellagio
清水灣半島	The Oscar by the sea
太湖山莊	Duplex in Serenity Villa
朗豪坊寫字樓	Office in Longham Place
好時華庭獨立屋	House in Houston Villa
恩悅新禧站之設計顧問	Design consultant for wedding company
青衣葉紀南紀念中學美術室	Art room in Buddhist Yip Kei Nam Memorial College

香港九龍大角咀合桃街9號惠立工業大廈208室
Room 208, Walnut Industrial Building, 9 Walnut Street,
Tai Kok Tsui, Kowloon, Hong Kong.
Tel: (852) 2115 9422
Fax: (852) 2115 9433
Email: matthew@100mm.com.hk
Website: www.100mm.com.hk



清水灣半島 The Oscar by the sea 800 sq.ft.

“What effect will clean simple lines add, and will mirrors effectively enhance a space?”



Searching the Community for Talent
Around late 2003 to early 2004, a friend came over to Matthew Ng's personally-designed home, and after looking at it commented and asked; "It's so beautiful - is this attractive home really designed by you?" Having worked for Philips Lighting, Matthew has a Business Administration and Electrical Engineering background, and he has also studied psychology and philosophy. Together with his knack for designing it was only natural that he start out in the design industry. So, he did design his own home and he did enter the interior design industry, and by following his heart and doing what he loves he was guided to a position that he is very keen of today.

Deconstruction and Reconstruction
Matthew's natural curiosity lead him to keep on learning, and within his great interest in philosophy, he became acquainted with the theory that "one must deconstruct something in order to and find and restore it to it's true state," which he applied to design. After breaking something down, extracting its core elements, and putting it back together it will then become more beautiful and pure. Matthew does not just blindly follow trends and will not reduce all the elements in the room just to make a space more 'minimalist,' but he will ask questions like, "What effect will clean simple lines add, and will mirrors effectively enhance a space?" In addition to mirrors, Matthew will also always weigh up other options such as the effect of using concrete, marble or tiles to build the wall. He will do this comparative evaluation all over an interior - deconstructing the style, focusing on the essential elements and reconstructing the elements until he has the right material or look, which is the way Matthew designs. Matthew does not place emphasis on the style, but more the feeling and the atmosphere. By breaking an element down to its core and finding its inner essence, Matthew discovers the real value of things and extracts what is most important about those individual elements. It is through this deconstruction and reconstruction process that Matthew achieves a successful design.

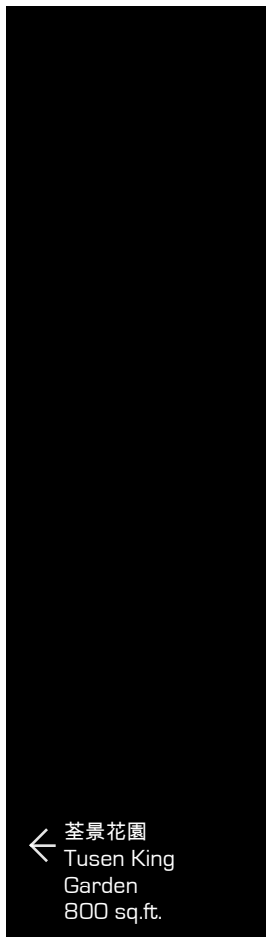
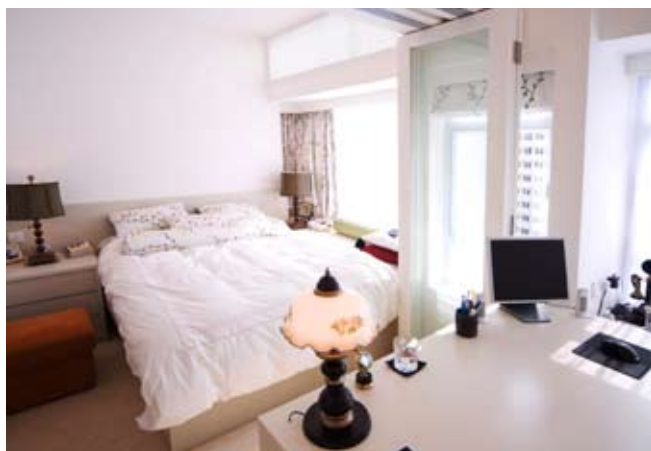
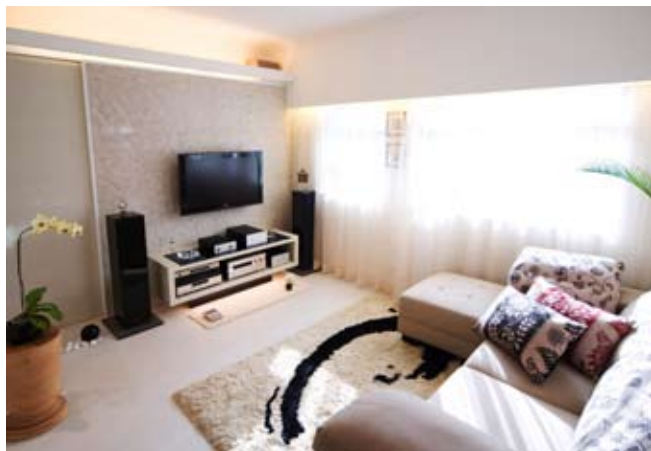
Light Leads The Way
Having worked for Philips Lighting, Matthew now has an experienced view on the use and application of lighting. Instead of just practical illumination, he places great emphasis on the atmosphere and mood of an interior - and by highlighting, dimming or spotlighting certain areas he can create a different mood, lighting up an area to resemble a theatre or extravagant banquet, for example. He is particularly fond of using old-style "lanterns," which dynamically light up the room with shadows and light effects, having the same impact as the old British-style gas

lamps that used to light up homes at night. As well as the use of light, Matthew also uses darkness to produces special effects and bring a unique ambience to a room. Just by experimenting with the concept of "lighting," the talented Matthew Ng can add more depth and create three-dimensional effects in a room, so it is no wonder that his clients greatly appreciate his work.

Bold Experimentation
When talking to Matthew he speaks with confidence and wisdom about many topics, but when he gives insight into the beauty of his own home and talks about the processes and steps he went through to make his home a reality, what he reveals is amazing. The design of his home is lively and reflects his personality at the same time. In accord with his deconstruction and reconstruction approach, Matthew merged a combination of styles into the stylish blend that is his home: combining historical Chinese paintings with thick wooden doors; deep brown Thailand oak flooring; lively South Korean wallpaper; British-style lamps and more. The combination of elements was essentially an experiment, and when these elements were all finally correctly combined together, the dynamic space was livened up and a chemical reaction occurred, which resulted in the lively space that now exists.

Professional Relations
Matthew thinks that a good design is built on the trust and understanding with the clients, and he therefore places special emphasis on communication with the clients, and even puts himself into the client's shoes to directly think about their needs. Even when clients might have a lack of funds he will considerably help them to invest in the areas that are most important. As his business is today, Matthew regards clients as his friends, and he no longer places as much importance on the running of the business and operation as he did before - instead taking the time to build relationships and understand the clients more. He has begun to design out of his heart - the designer is only happy when the client is happy, and this is the key.

Profile:
Matthew Ng has a degree in business administration and has had professional experience with electrical engineering, having done a stint in Philips Lighting. He made his beginnings in the design industry in 2004 where his experiences grew until he established 100mm design workshop limited in 2006. With his company he does not limit his style, and he considers everything from how to make effective use of lighting, the angles, and even merging different elements to create a unique blend of styles, which builds trust and faith in his clients.



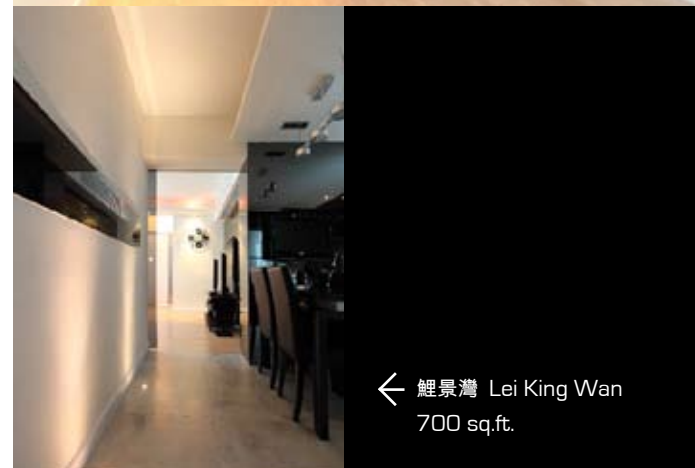
← 荃景花園
Tusen King
Garden
800 sq.ft.



↑ 沙田住宅 Shatin apartment 1,200 sq.ft.



↑ 美菱居 Merit Place 800 sq.ft.



← 鯉景灣 Lei King Wan
700 sq.ft.

“簡約除了有空間感和線條簡潔之外還有甚麼？”

天份導航 眾裡尋「她」

2004年以前，朋友若看了Matthew自己設計的家，都會難以置信地問他：「這麼漂亮的家是你設計的嗎？」Matthew擁有工商管理及電機工程的背景，曾在飛利浦任職燈光設計，而且對心理學及哲學尤其有研究，再加上自身的設計天賦，順理成章地推動了他在設計界的發展。眾裡尋她，對室內設計純粹的喜愛和天份，令他在芸芸興趣之中，找到了他的至愛。

拆解與融合

好奇心驅使Matthew不斷學習，由於喜愛哲學，他常以哲學「拆解後還原」的思考方法用作設計之上，將各種風格的不同條分縷析，提煉出最原始的元素，拼合融和，表現出和諧與美。他不會盲目追隨潮流的「簡約」，會思考「簡約除了有空間感和線條簡潔之外還有甚麼？除了鏡之外，又可否用砂石面、雲石或瓷造牆？」等問題。拆解風格、抓住竅門、重組元素，便成了Matthew設計的特色。他著重表達本質與特性，不會強調風格，反而看重整體氣氛的控制，與時並進、學習新鮮事物，並從潮流抽取精華相互融合，通過拆解、還原和自由組合，成就出好設計。

以光暗點睛

在飛利浦任職燈光設計的經驗，令Matthew對燈光運用的見解份外獨到。他著重氣氛的營造，並以燈光突出氣氛和重點，或是構成鄉村小品，或是營造宴會式貴氣。而他特別著重角落，設計之中常不經意地在角落「點燈」，常以英式壁燈的昏黃表達懷舊、含蓄的貴氣，讓一室頓時散發充滿內涵的氣質。除了運用光，Matthew還會運用幽暗製造特別適合獨處和思考的空間。只單單用了「燈光」，便將設計變得立體而充滿深度，Matthew以光影為居室設計點睛，心思細密，難怪深受客人讚賞。

大膽實驗

Matthew侃侃而談，話題多又廣，時而分享宮殿式設計的妙處，時而又幻想自己的家以遊樂場為藍本設計，翻天覆地。而他的設計就和他的個性一樣輕鬆活潑：拆解與分析之後，Matthew會將不同風格中重要的元素重新組合：歷史味道甚濃的中式畫門和泰式的深啡橡木地板，在活潑的韓國圖案牆紙配襯下竟似返老還童，居室感覺年輕活潑不覺沉悶，再加上營造氣氛的高手——英式燈的點綴，設計竟像實驗一樣，產生了意想不到的化學作用，充滿驚喜。

建立關係

Matthew認為一個好的設計，建基於客人的信任與了解，因此，他特別著重與客人溝通，甚至把自己當成是演員，投入成客人家中一員，真切地想自己所需後，再將有限的資源落在最合適最重要的地方。時至今日，Matthew已把客人當成朋友，看重的不再是生意、營運、充滿計算的商業，反而重視建立關係，我手設計出我心，設計者喜歡時用者又喜歡，這樣最具意義！

簡歷：

Matthew Ng擁有工商管理學位及電機工程的背景，曾在飛利浦任職燈光設計，2004年攻讀設計並吸收實戰經驗，在2006建立100mm design workshop limited，創立事業。涉獵範疇廣泛，思考角度開闊，擅長燈光運用，設計破舊立新，風格多變，因而深受用家信任與喜愛。